



NT-iDENT

*Technology Center –
production of customized
prosthetic solutions in
CAD/CAM process*



SERVICE AT A GLANCE

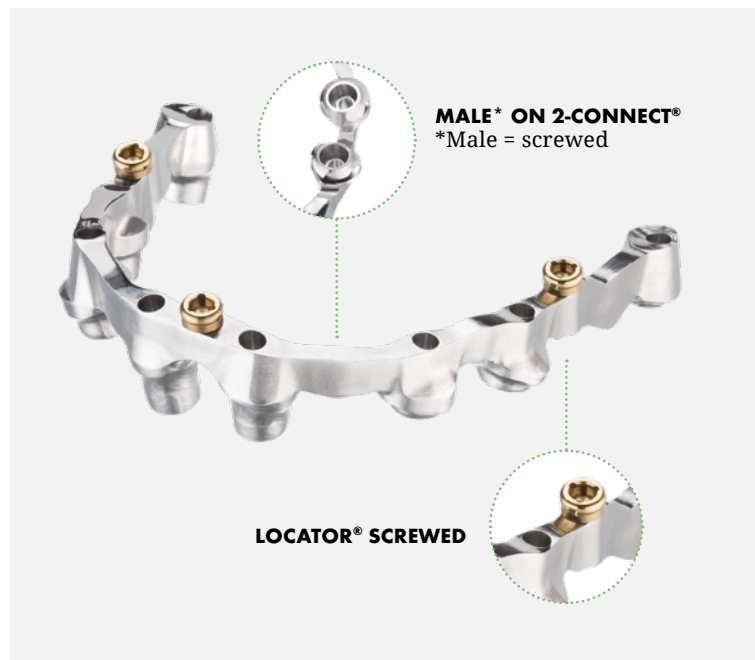
The NTiDent technology center gives you the opportunity to offer high-precision and certified implant supra structures in addition to your current manufacturing capacity and product portfolio.

NT*iDent*

- Production of digital implant models by additive manufacture technology
- Custom made abutments
- Manufacture of directly screw retained bridges/bars on implants as well as meso/tertiary structures in materials as CoCr, Peek (Dentokeep), and titanium
- Crowns and bridges in materials as Zirconium, PMMA, Peek (Dentokeep), CoCr and titanium
- Safety tested through highest production and quality standards
- Scan and design service



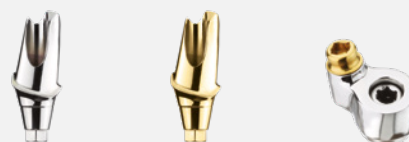
SERVICE PORTFOLIO



COCR / TITANIUM



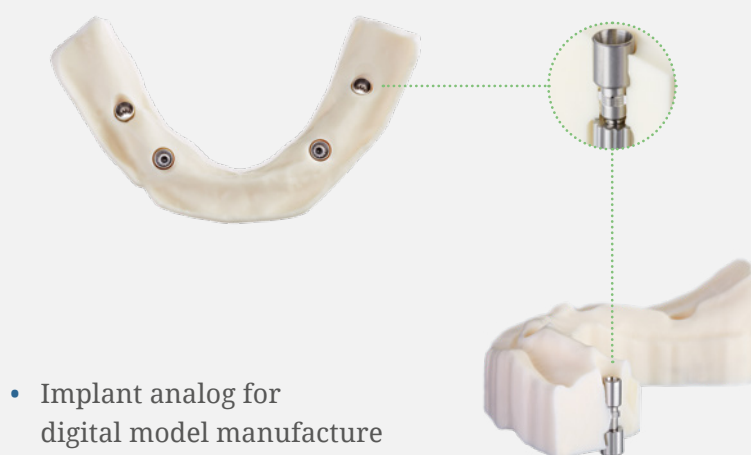
CUSTOM ABUTMENTS / ATTACHMENTS



DIGITAL IMPLANT MODEL



DIM-ANALOG®



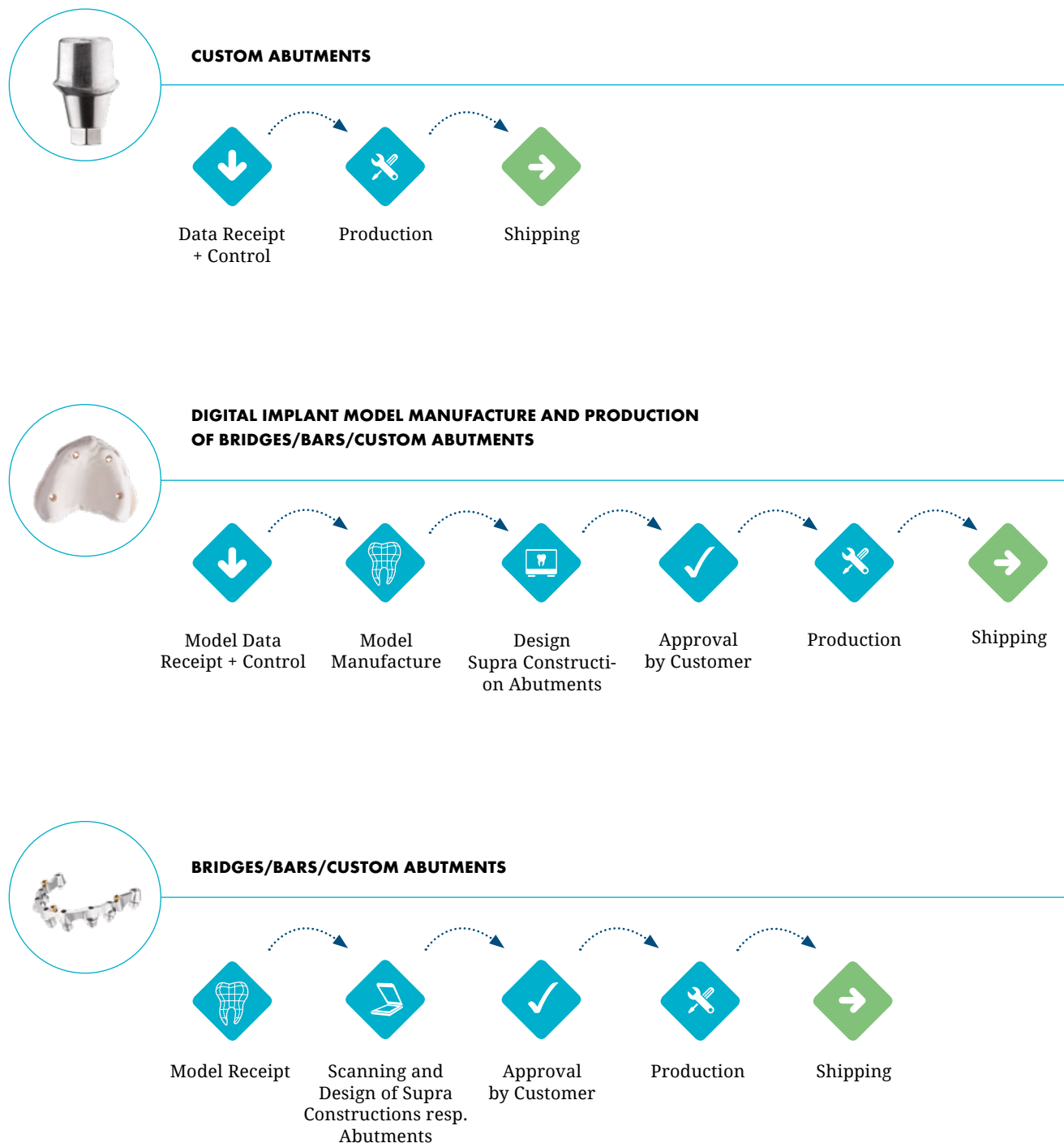
- Implant analog for digital model manufacture
- Two-piece implant analog
- Exactly positionable
- Position correction possible



ZIRCONIUM / PEEK / PMMA



PROCESS OPERATIONS



SENDING DATA AND SHIPPING OF MODELS



DATATRANSFER

- FTP-Server
- E-mail: i-dent@nt-trading.com
(up to a maximum of 5 MB)
- <https://ident.wetransfer.com>
(up to a maximum of 20 GB)



MODELTRANSFER

- Please send it to the following address:

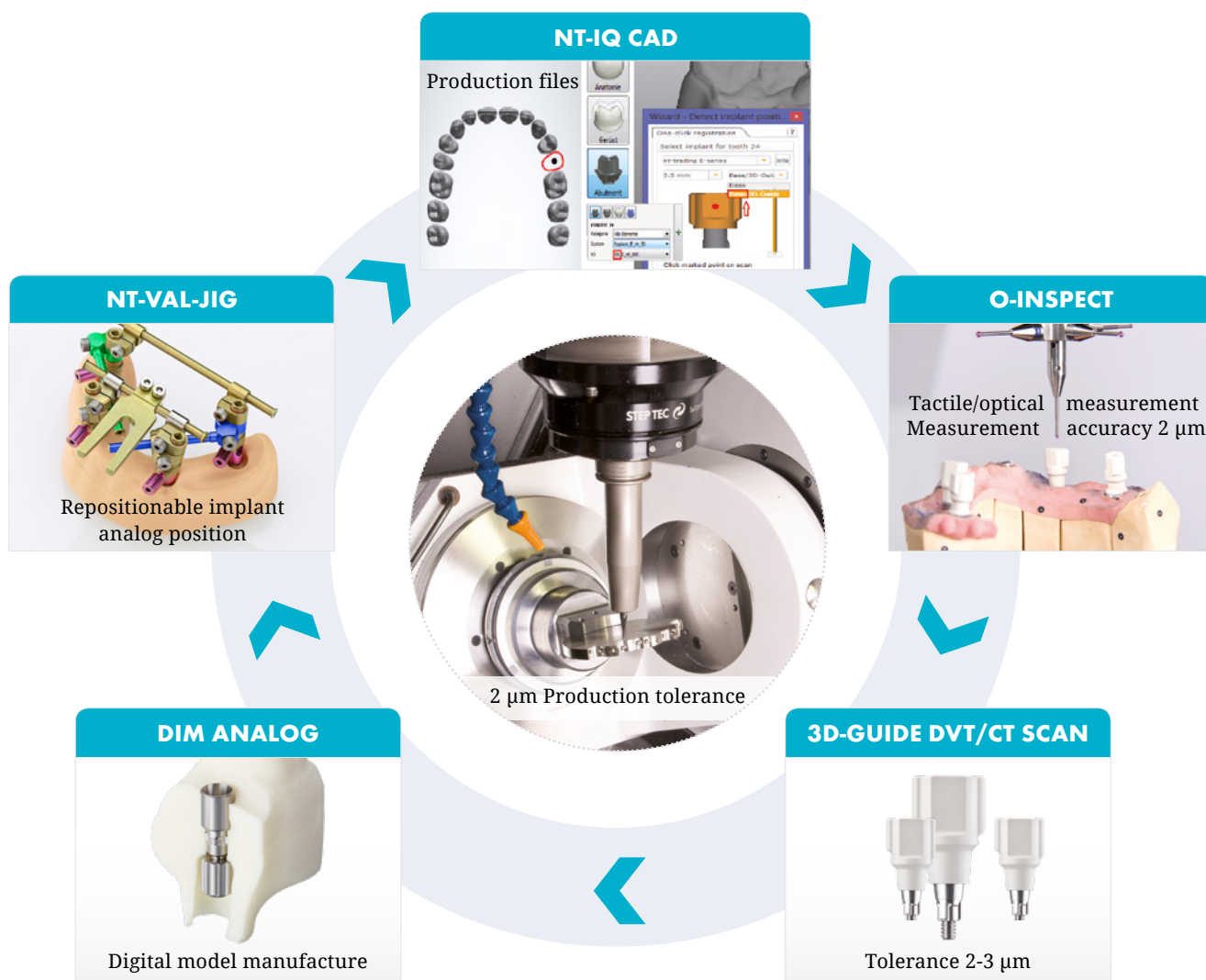
nt-trading GmbH & Co. KG
G.-Braun-Str. 18
76187 Karlsruhe
Germany



NTiDENT DELIVERY TIMES

- Individually manufactured abutments: **1–2 workdays** after data receipt, **2–3 workdays** after model receipt
- bridges/bars: **3 workdays** after data receipt, **5 workdays** after model receipt

PROVED DIGITAL IMPLANT WORKFLOW



NT-TRADING GMBH & CO. KG
G.-Braun-Str.18
76187 Karlsruhe/Germany



Phone: +49 (0)721 / 91 54 71 60
Fax: +49 (0)721 / 91 54 71 61



i-dent@nt-trading.com
www.nt-ident.com