

E-SERIES



compatible to:
Nobel Biocare™ / Replace Select®



3,5 mm NP



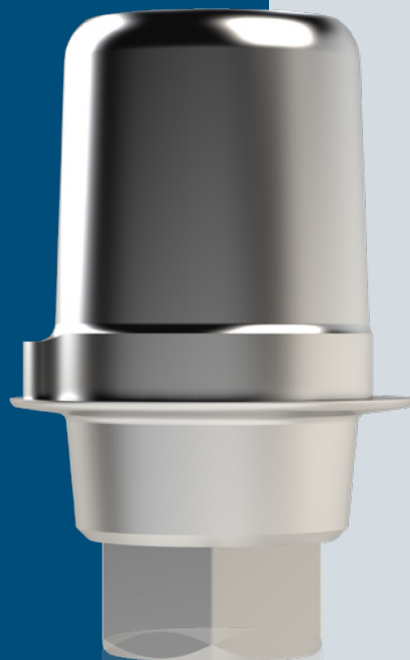
5,0 mm WP



4,3 mm RP

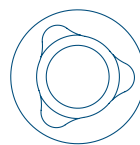


6,0 mm



**PRECISION
MEETS QUALITY.**

**OVERVIEW
PLATFORMS:**



3,5 mm NP



4,3 mm RP

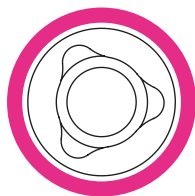


5,0 mm WP



6,0 mm

 **MADE IN
GERMANY**



3,5 mm NP
Nobel Biocare™ / Replace Select®



Titanium Base (engaged)
incl. Abutmentscrew

E 800



Scanbody 3D-Guide®
for intra + extra oral scanning

E 9.S3D3.500



Lab Analog

E 50



Implant Pick Up
for open-tray with integrated screw

E TR-NP013.5



Abutment Screw
recommended tightening torques 35 Ncm

E 60



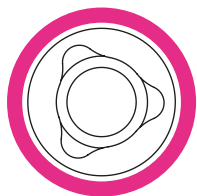
DIM-ANALOG®

E 5.DIM.350



Sleeve (for DIM-ANALOG®)
for plaster model

DIM 5.XSL.A10



3,5 mm NP
Nobel Biocare™ / Replace Select®



2-CONnect®-Abutment Set (straight)

incl. 2-CONnect®-Coping Female Part and 2-CONnect®-Coping-screw

GH 0,5 mm E 800 S

GH 2,5 mm E-2CON 8035002S



2-CONnect®-Abutment

Male Part, recommended tightening torques 35 Ncm

GH 0,5 mm E 800 M

GH 2,5 mm E-2CON 8035002M



2-CONnect® Scanbody 3D-Guide®

for intra + extra oral scanning

2CON 9.S3D1.800



2-CONnect®-Coping

Female Part

2CON F-U



2-CONnect®-Coping-Screw

recommended tightening torques 30 Ncm

KS 61



2-CONnect®-DIM-ANALOG®

for straight Male Part, KS 61

2CON 5.DIM.180



Sleeve (for DIM-ANALOG®)

for plaster model

DIM 5.XSLA30



2-CONnect®-Implant pick-up

for open-tray with integrated screw

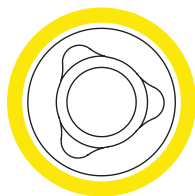
2CON TR-00021.8



2-CONnect®-lab Analog

for straight Male Parts

2CON 5.La1.800



4,3 mm RP
Nobel Biocare™ / Replace Select®



Titanium Base (engaged)
incl. Abutmentscrew

E 810



Scanbody 3D-Guide®
for intra + extra oral scanning

E 9.S3D4.300



Lab Analog

E 51



Implant Pick Up
for open-tray with integrated screw

E TR-RP024.3



Abutment Screw
recommended tightening torques 35 Ncm

E 61



DIM-ANALOG®

E 5.DIM.430



Sleeve (for DIM-ANALOG®)
for plaster model

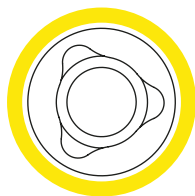
DIM 5.XSL.A20

E-SERIES

Notice: Products indicated with ® and ™ are registered brand names of the respective manufacturer.

 **MADE IN
GERMANY**

USA.NT.DENTAL



4,3 mm RP

Nobel Biocare™ / Replace Select®



2-CONnect®-Abutment Set (straight)

incl. 2-CONnect®-Coping Female Part and 2-CONnect®-Coping-screw

GH 0,5 mm E 810 S

GH 2,5 mm E-2CON 8043002S



2-CONnect®-Abutment

Male Part, recommended tightening torques 35 Ncm

GH 0,5 mm E 810 M

GH 2,5 mm E-2CON 8043002M



2-CONnect® Scanbody 3D-Guide®

for intra + extra oral scanning

2CON 9.S3D1.800



2-CONnect®-Coping

Female Part

2CON F-U



2-CONnect®-Coping-Screw

recommended tightening torques 30 Ncm

KS 61



2-CONnect®-DIM-ANALOG®

for straight Male Part, KS 61

2CON 5.DIM.180



Sleeve (for DIM-ANALOG®)

for plaster model

DIM 5.XSLA30



2-CONnect®-Implant pick-up

for open-tray with integrated screw

2CON TR-00021.8



2-CONnect®-lab Analog

for straight Male Parts

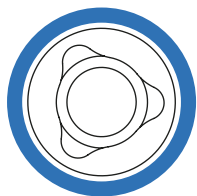
2CON 5.La1.800

E-SERIES

Notice: Products indicated with ® and ™ are registered brand names of the respective manufacturer.

 MADE IN
GERMANY

USA.NT.DENTAL



5,0 mm WP

Nobel Biocare™ / Replace Select®



Titanium Base (engaged)

incl. Abutmentscrew

E 820



Scanbody 3D-Guide®

for intra + extra oral scanning

E 9.S3D5.000



Lab Analog

E 52



Implant Pick Up

for open-tray with integrated screw

E TR-WP035.0



Abutment Screw

recommended tightening torques 35 Ncm

E 61



DIM-ANALOG®

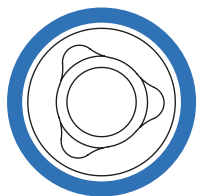
E 5.DIM.500



Sleeve (for DIM-ANALOG®)

for plaster model

DIM 5.XSL.A30



5,0 mm WP

Nobel Biocare™ / Replace Select®



2-CONnect®-Abutment Set (straight)

incl. 2-CONnect®-Coping Female Part and 2-CONnect®-Coping-screw

GH 0,5 mm E 820 S

GH 2,5 mm E-2CON 8050002S



2-CONnect®-Abutment

Male Part, recommended tightening torques 35 Ncm

GH 0,5 mm E 820 M

GH 2,5 mm E-2CON 8050002M



2-CONnect® Scanbody 3D-Guide®

for intra + extra oral scanning

2CON 9.S3D1.800



2-CONnect®-Coping

Female Part

2CON F-U



2-CONnect®-Coping-Screw

recommended tightening torques 30 Ncm

KS 61



2-CONnect®-DIM-ANALOG®

for straight Male Part, KS 61

2CON 5.DIM.180



Sleeve (for DIM-ANALOG®)

for plaster model

DIM 5.XSLA30



2-CONnect®-Implant pick-up

for open-tray with integrated screw

2CON TR-00021.8



2-CONnect®-lab Analog

for straight Male Parts

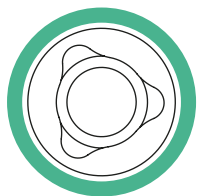
2CON 5.La1.800

E-SERIES

Notice: Products indicated with ® and ™ are registered brand names of the respective manufacturer.

 **MADE IN
GERMANY**

USA.NT.DENTAL



6,0 mm

Nobel Biocare™ / Replace Select®



Titanium Base (engaged)

incl. Abutmentscrew

E 830



Scanbody 3D-Guide®

for intra + extra oral scanning

E 9.S3D6.000



Lab Analog

E 53



Abutment Screw

recommended tightening torques: 35 Ncm

E 61



DIM-ANALOG®

E 5.DIM.600



Sleeve (for DIM-ANALOG®)

for plaster model

DIM 5.XSL.A60

NOTES

[illegible]

EUROPE

NT-Trading GmbH & Co. KG

G.-Braun-Str. 18
76187 Karlsruhe
Germany

E info@nt.dental

W www.nt.dental

NORTH AMERICA

NT-US, Inc.

132 Pepes Farm Road,
Unit 3
Milford, CT 06460
USA

E info@nt.dental (general information)

E order-us@nt.dental (for orders)

W usa.nt.dental

2024_NT_US_Serienbroschüre_E_EN_REV01