

# L-SERIES



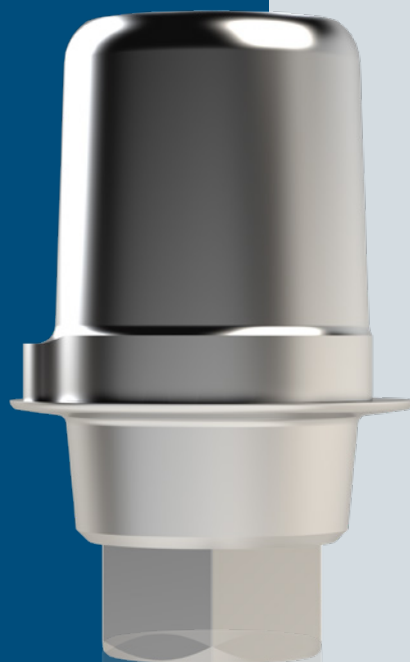
compatible to:  
Straumann Bone Level®



3,3 mm NC

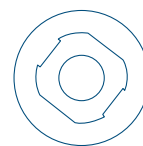


4,1 / 4,8 mm RC



**PRECISION  
MEETS QUALITY.**

**OVERVIEW  
PLATFORMS:**



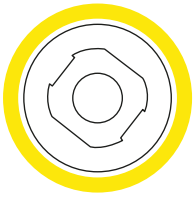
3,3 mm NC



4,1 / 4,8 mm RC

---

 **MADE IN  
GERMANY**



3,3 mm NC  
Straumann Bone Level®



**Titanium Base (engaged)**  
incl. Abutmentscrew

L 800



**Scanbody 3D-Guide®**  
for intra + extra oral scanning

L 9.S3D3.300



**Lab Analog**

L 50



**Implant Pick Up**  
for open-tray with integrated screw

L TR-NC013.3



**Abutment Screw**  
recommended tightening torques: 35 Ncm

L 60



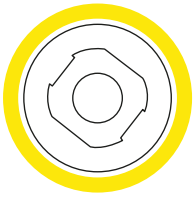
**DIM-ANALOG®**

L 5.DIM.330



**Sleeve (for DIM-ANALOG®)**  
for plaster model

DIM 5.XSLA10



3,3 mm NC  
Straumann Bone Level®



**2-CONnect®-Abutment Set (straight)**  
incl. 2-CONnect®-Coping Female Part and 2-CONnect®-Coping-screw

GH 0,5 mm L 800 S  
GH 2,5 mm L-2CON 8033002S



**2-CONnect®-Abutment**  
Male Part, recommended tightening torques 35 Ncm

GH 0,5 mm L 800 M  
GH 2,5 mm L-2CON 8033002M



**2-CONnect® Scanbody 3D-Guide®**  
for intra + extra oral scanning

2CON 9.S3D1.800



**2-CONnect®-Coping**  
Female Part

2CON F-U



**2-CONnect®-Coping-Screw**  
recommended tightening torques 30Ncm

KS 61



**2-CONnect®-DIM-ANALOG®**  
for straight Male Part, KS 61

2CON 5.DIM.180



**Sleeve (for DIM-ANALOG®)**  
for plaster model

DIM 5.XSLA30



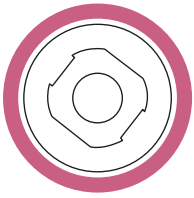
**2-CONnect®-Implant pick-up**  
for open-tray with integrated screw

2CON TR-00021.8



**2-CONnect®-lab Analog**  
for straight Male Parts

2CON 5.La1.800



4,1 / 4,8 mm RC  
Straumann Bone Level®



**Titanium Base (engaged)**  
incl. Abutmentscrew

L 810



**Scanbody 3D-Guide®**  
for intra + extra oral scanning

L 9.S3D4.148



**Lab Analog**

L 51



**Implant Pick Up**  
for open-tray with integrated screw

L TR-RC024.1



**Abutment Screw**  
recommended tightening torques: 35 Ncm

L 60



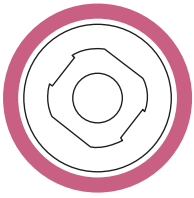
**DIM-ANALOG®**

L 5.DIM.414



**Sleeve (for DIM-ANALOG®)**  
for plaster model

DIM 5.XSLA20



4,1 / 4,8 mm RC  
Straumann Bone Level®



**2-CONnect®-Abutment Set (straight)**

incl. 2-CONnect®-Coping Female Part and 2-CONnect®-Coping-screw

GH 0,5 mm L 810 S

GH 2,5 mm L-2CON 8041482S



**2-CONnect®-Abutment**

Male Part, recommended tightening torques 35 Ncm

GH 0,5 mm L 810 M

GH 2,5 mm L-2CON 8041482M



**2-CONnect® Scanbody 3D-Guide®**

for intra + extra oral scanning

2CON 9.S3D1.800



**2-CONnect®-Coping**

Female Part

2CON F-U



**2-CONnect®-Coping-Screw**

recommended tightening torques 30Ncm

KS 61



**2-CONnect®-DIM-ANALOG®**

for straight Male Part, KS 61

2CON 5.DIM.180



**Sleeve (for DIM-ANALOG®)**

for plaster model

DIM 5.XSLA30



**2-CONnect®-Implant pick-up**

for open-tray with integrated screw

2CON TR-00021.8



**2-CONnect®-lab Analog**

for straight Male Parts

2CON 5.La1.800



## EUROPE

### **NT-Trading GmbH & Co. KG**

G.-Braun-Str. 18  
76187 Karlsruhe  
Germany

**E** [info@nt.dental](mailto:info@nt.dental)

**W** [www.nt.dental](http://www.nt.dental)

## NORTH AMERICA

### **NT-US, Inc.**

132 Pepes Farm Road,  
Unit 3  
Milford, CT 06460  
USA

**E** [info@nt.dental](mailto:info@nt.dental) (general information)

**E** [order-us@nt.dental](mailto:order-us@nt.dental) (for orders)

**W** [usa.nt.dental](http://usa.nt.dental)

2024\_NT\_US\_Serienbroschüre\_L\_EN\_REV01