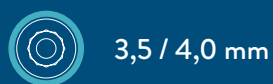


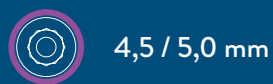
S-SERIES



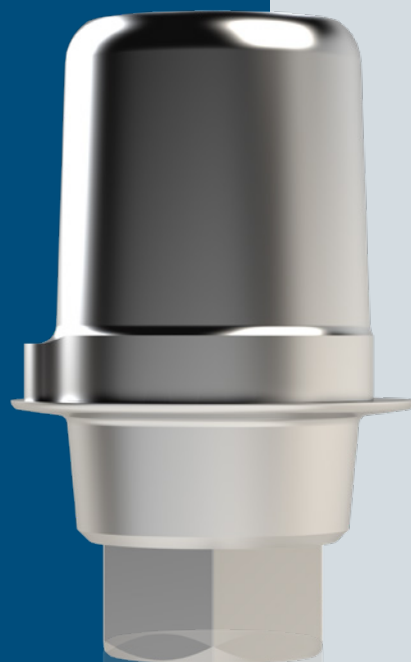
compatible to:
Dentsply Implants® / Astra Tech
Implant System OsseoSpeed® TX



3,5 / 4,0 mm

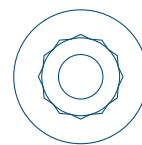


4,5 / 5,0 mm



**PRECISION
MEETS QUALITY.**

**OVERVIEW
PLATFORMS:**

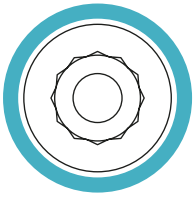


3,5 / 4,0 mm



4,5 / 5,0 mm

 **MADE IN
GERMANY**



3,5 / 4,0 mm

Dentsply Implants® / Astra Tech Implant System OsseoSpeed® TX



Titanium Base (engaged)
incl. Abutmentscrew

S 800



Scanbody 3D-Guide®
for intra + extra oral scanning

S 9.S3D3.540



Lab Analog

S 50



Implant Pick Up
for open-tray with integrated screw

S TR-00013.5



Abutment Screw
recommended tightening torques 25 Ncm

S 60



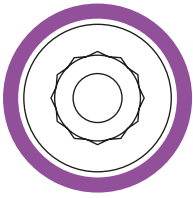
DIM-ANALOG®

S 5.DIM.354



Sleeve (for DIM-ANALOG®)
for plaster model

DIM 5.XSLA10



4,5 / 5,0 mm

Dentsply Implants® / Astra Tech Implant System OsseoSpeed® TX



Titanium Base (engaged)
incl. Abutmentscrew

S 820



Scanbody 3D-Guide®
for intra + extra oral scanning

S 9.S3D4.550



Lab Analog

S 52



Implant Pick Up
for open-tray with integrated screw

S TR-00024.5



Abutment Screw
recommended tightening torques 25 Ncm

S 61



DIM-ANALOG®

S 5.DIM.455



Sleeve (for DIM-ANALOG®)
for plaster model

DIM 5.XSLA20

EUROPE

NT-Trading GmbH & Co. KG

G.-Braun-Str. 18
76187 Karlsruhe
Germany

E info@nt.dental

W www.nt.dental

NORTH AMERICA

NT-US, Inc.

132 Pepes Farm Road,
Unit 3
Milford, CT 06460
USA

E info@nt.dental (general information)

E order-us@nt.dental (for orders)

W usa.nt.dental

2024_NT_US_Serienbrochure_S_EN_REV01