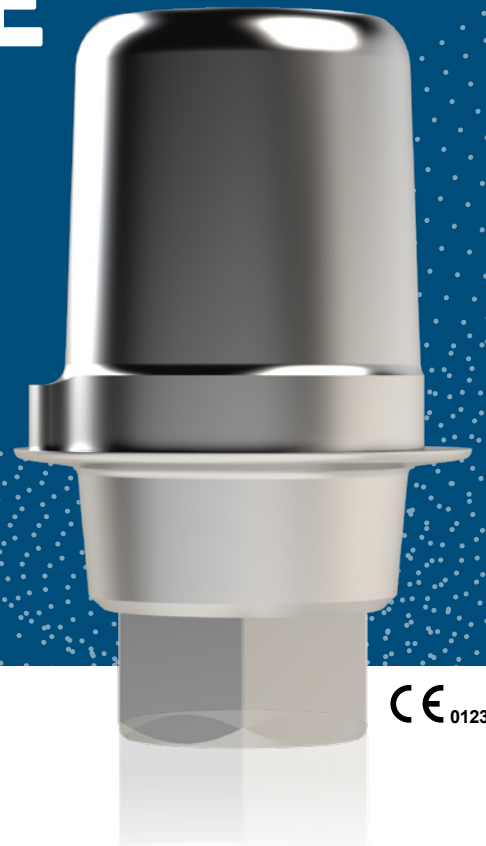




TITANIUM BASE

For the production of customized implant-supported hybrid abutments. Available for a wide range of common implant systems.



Datenblatt_Titanbasis_230818_EN_V002 Seite 1/1



BENEFITS

- engaging
- individual abutment design within the CAD software via the NT-IQ implant libraries
- large-area bonding, therefore permanent and stable connection to the base
- applicable for conventional processing or CAD/CAM technology

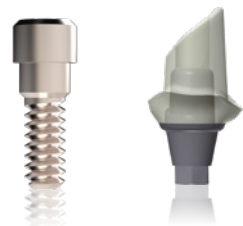
APPLICATION

- to bond individually manufactured superstructures from ceramic materials (zirconium dioxide, lithium disilicate) or plastics.

TECHNICAL DETAILS

- Ti6Al4V ELI Grade 23

 THE SECURE CONNECTION
PRECISE. PROVEN. RELIABLE.





3D-Guide®

Scanbody for high-precision transfer of the implant position. Available for a wide range of common implant systems.



Datenblatt: 3DGuide_230818_EN_V002 Seite 1/1

BENEFITS

- exact positioning via metal interface
- suitable for intraoral scanners
- the different geometries of the lateral surfaces guarantee an exact repositioning in the CAD software is even with incomplete capture
- integrated aspiration-proof screw
- x-ray detectable
- rotatable in case of tooth crowding
- series and platform can be easily identified by laser engraving

APPLICATION

- Scanbody for model scan
- Scanbody for intraoral scan

TECHNICAL DETAILS

- 2-3 µm manufacturing tolerance

WWW.NT.DENTAL

NT-Trading GmbH & Co. KG, G.-Braun-Straße 18 · 76187 Karlsruhe · Germany

NT DIGITAL
DENTAL
TECHNOLOGY



2-CONnect®

Multiunit Abutment, available in various gingival heights and angulations for a variety of common implant systems.



Dateiplat: 2-CONnect_EN_V002 Seite 1/1



BENEFITS

- self-centering cone connection
- proven flexibility for divergent implant positions, can be additionally combined with NT LOcON (Locator® type attachment)
- tension-free fit through optional adhesive connection (female part)
- applicable for conventional processing or CAD/CAM technology
- optimized abutment design enables even distribution of occurring forces
- female part (cap) covers all common implant systems and platforms



The NT LOcON attachment is an ingenious concept that redefines flexibility and efficiency.

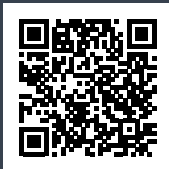
APPLICATION

- bars
- bridges
- prosthetics in connectivity with the NT LOcON system

TECHNICAL DETAILS

- Ti6Al4V ELI Grade 23





TITANIUM BASE NX

Titanium Base (NoHex) for the production of individual bridge/bar constructions on multiple implants.



BENEFITS

- non-engaging
- can be shortened from 5 mm to 3 mm, considering different occlusal space conditions
- available in two gingival heights
- optimized emergence profile, very good adaptation to existing gingiva conditions
- specially developed for CAD/CAM technology

APPLICATION

- For individual bridge/bar constructions on several implants made of ceramic materials (zirconium dioxide, lithium disilicate) or plastics (PMMA, PEEK, composite).

TECHNICAL DETAILS

- Ti6Al4V ELI Grade 23



DIM-ANALOG®

Digital Implant Model Analog - available for a variety of common implant systems within the NT-IQ implant libraries.



Dateplatt_DIM-ANALOG_230818_EN_V002 - Seite 1/1

BENEFITS

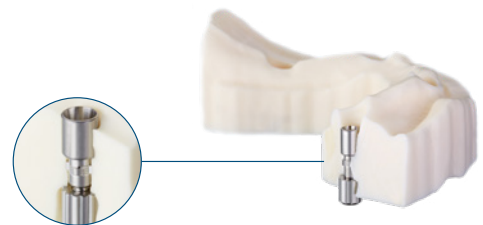
- implant analog for digital model production within the modelbuilder CAD applications
- two-part repositionable implant analog
- exact positioning through guidance elements
- position correction possible
- design supports exact repositioning of removable gingival parts
- sleeve for optional use in conventional plaster models

APPLICATION

- For the production of implant models in the digital workflow.

TECHNICAL DETAILS

- Ti6Al4V ELI Grade 23
- stainless steel





nt-Preform® + HOLDER

Abutment blank individual for one-piece titanium abutments in the CAD/CAM-process. Available for a variety of common implant systems.



Dateblatt_nt-Preform_Holder_230818_EN_V002 Seite 1/1



BENEFITS

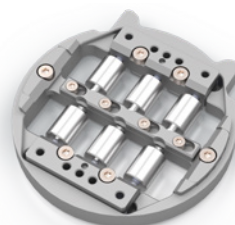
- precise prefabricated abutment-implant interface
- individual abutment design according to prosthetic aspects (inclination, emergence profile, etc.) within the CAD software via the NT-IQ implant libraries
- market proven bi-lateral clamping set-up for stable and fast machining (supported in most CAM systems)
- uni-lateral clamping set-up is optionally available (supported in most CAM systems)
- final abutment screw and milling screw separately available

APPLICATION

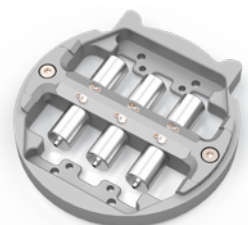
- primary telescopes on implants
- mesio-structures for crowns and bridges for cementation
- occusal screwable structures

TECHNICAL DETAILS

- Ti6Al4V ELI Grade 23 (nt-Preform®)



Bilateral fixation

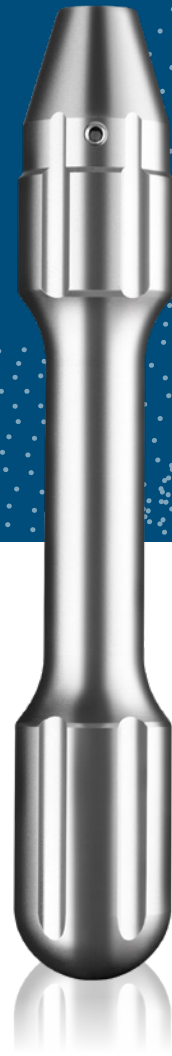


One-sided fixation



NT X-tra Holder Set

The multi-part X-tra Holder Set protects the implant interface from damage during the finishing/processing phase.



Date: plat. NTX-tra_Holdg_Set_230818_EN_V002 Seite 1/1

BENEFITS

- solid stainless steel grip for optimal heat dissipation during finishing/processing
- includes three inserts to cover a large number of common implant systems on three mill lab analog sizes
- easy and quick exchange of mill lab analogs and inserts

SET INCLUDES

- handle
- screwdriver for handle
- insert for handle Ø 3.5 mm
- insert for handle Ø 4.3 mm
- insert for handle Ø 5.0 mm

