



# nt-Preform® + HOLDER

Abutment blank individual for one-piece titanium abutments in the CAD/CAM-process. Available for a variety of common implant systems.



Dateblatt\_nt-Preform\_Holder\_230818\_EN\_V002 Seite 1/1



## BENEFITS

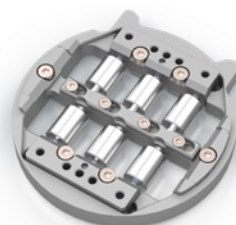
- precise prefabricated abutment-implant interface
- individual abutment design according to prosthetic aspects (inclination, emergence profile, etc.) within the CAD software via the NT-IQ implant libraries
- market proven bi-lateral clamping set-up for stable and fast machining (supported in most CAM systems)
- uni-lateral clamping set-up is optionally available (supported in most CAM systems)
- final abutment screw and milling screw separately available

## APPLICATION

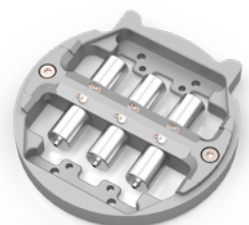
- primary telescopes on implants
- mesio-structures for crowns and bridges for cementation
- occusal screwable structures

## TECHNICAL DETAILS

- Ti6Al4V ELI Grade 23 (nt-Preform®)



Bilateral fixation



One-sided fixation